



Report No. HTT2026031155CH

RoHS Test Report

Application information:

Applicant name:	Henan wook Tools Co., ltd
Address:	23 Hezuo Road, Yucheng County, henan Provence, China
Manufacturer:	Henan wook Tools Co., ltd
Address:	23 Hezuo Road, Yucheng County, henan Provence, China

Sample information:

Sample Name:	tape measure
Sample Model:	N/A
Trade mark:	N/A
Sample Received Date:	Mar. 26, 2026
Testing Period:	Mar. 26, 2026 ~ Apr. 01, 2026
Test Requested:	As specified by client, to determine the Lead, Cadmium, Mercury, Hexavalent Chromium, PBBs, PBDEs, The Phthalate (DEHP, BBP, DBP & DIBP) content in the submitted sample compliance with RoHS directive 2011/65/EU Annex II amending Annex (EU)2015/863 and amending Annex (EU)2017/2102.
Test Method:	Please refer to next page.
Test Results	Please refer to next page(s).
Conclusion:	PASS

Completed by:

Louis. Liu

Reviewed by:

Leo Zhang

Approved by:

Kevin Yang

Technical Manager

Shenzhen HTT Technology Co., Ltd.



RoHS Test Report

1. Test Method(s):

As requested by the client, Reference to IEC 62321-3-1:2013 Procedures for the screening analysis of Lead (Pb), Cadmium (Cd), Mercury (Hg), total Chromium (Cr), and Bromine (Br) by XRF. If the screening analysis results exceed the screening limits of IEC 62321-3-1:2013 Annex A, use the chemical methods for testing.

Table1 IEC 62321-3-1:2013 Annex A screening limits of XRF (mg/kg)

Element	Polymer	Metal	Composite Materials
Cd	$BL \leq (70-3\sigma) < X < (130+3\sigma) \leq OL$	$BL \leq (70-3\sigma) < X < (130+3\sigma) \leq OL$	$LOD < X < (150+3\sigma) \leq OL$
Pb	$BL \leq (700-3\sigma) < X < (1300+3\sigma) \leq OL$	$BL \leq (700-3\sigma) < X < (1300+3\sigma) \leq OL$	$BL \leq (500-3\sigma) < X < (1500+3\sigma) \leq OL$
Hg	$BL \leq (700-3\sigma) < X < (1300+3\sigma) \leq OL$	$BL \leq (700-3\sigma) < X < (1300+3\sigma) \leq OL$	$BL \leq (500-3\sigma) < X < (1500+3\sigma) \leq OL$
Br	$BL \leq (300-3\sigma) < X$	Not applicable	$BL \leq (250-3\sigma) < X$
Cr	$BL \leq (700-3\sigma) < X$	$BL \leq (700-3\sigma) < X$	$BL \leq (500-3\sigma) < X$

BL = Less than screening limits of XRF

OL = More than screening limits of XRF

X = The results of screening analysis by XRF are within this range, requiring further chemical testing.

LOD = Limit of Detection

Table2 testing methods & Equipments

Testing Item	Testing Method	Equipment
Screening analysis by XRF		
Lead (Pb), Cadmium (Cd), Mercury (Hg) Chromium (Cr), Bromine (Br)	IEC 62321-3-1:2013	ED-XRF
Chemical testing		
Lead (Pb)	IEC 62321-5:2013	ICP-OES
Cadmium (Cd)	IEC 62321-5:2013	ICP-OES
Mercury(Hg)	IEC 62321-4:2013+A1:2017	ICP-OES
Hexavalent chromium (Cr(VI)) for plastic	IEC 62321-7-2:2017	UV-VIS
Hexavalent chromium (Cr(VI)) for coating on metals	IEC 62321-7-1:2015	UV-VIS
PBBs	IEC 62321-6:2015	GC-MS
PBDEs	IEC 62321-6:2015	GC-MS
DBP	IEC 62321-8:2017	GC-MS
BBP	IEC 62321-8:2017	GC-MS
DEHP	IEC 62321-8:2017	GC-MS
DIBP	IEC 62321-8:2017	GC-MS



RoHS Test Report

2. Method Detection Limit (MDL):

For XRF screening analysis (mg/kg)

Item	Pb	Cd	Hg	Br	Cr
Polymer	20	20	20	20	20
Other materials	50	50	50	50	50

For chemical testing (mg/kg)

Item	Pb	Cd	Hg	PBBs	PBDEs	DEHP	BBP	DBP	DIBP	Cr(VI)
General materials	2	2	2	10	10	50	50	50	50	See remark (2)

Remark:

(1) PBBs and PBDEs method detection limit only for one substance;

(2) MDL for polymer and Composites is 8 mg/kg, MDL for coating on metals is 0.10 $\mu\text{g}/\text{cm}^2$.

3. RoHS Requirement (mg/kg):

Restricted substances	Cd	Pb	Hg	Cr(VI)	PBBs	PBDEs	DEHP	BBP	DBP	DIBP
RoHS limit	100	1000	1000	1000	1000	1000	1000	1000	1000	1000



RoHS Test Report

4. Test Result(s):

Part No.	Part Description	Restricted Substances	Results (mg/kg)		Conclusion (P/F)
			EDXRF	Chemical testing	
01	Yellow plastic shell	Cd	BL	/	P
		Pb	BL	/	P
		Hg	BL	/	P
		Cr(VI)	BL	/	P
		PBBs	BL	/	P
		PBDEs	BL	/	P
		DEHP	/	N.D.	P
		DBP	/	N.D.	P
		BBP	/	N.D.	P
		DIBP	/	N.D.	P
02	Black plastic shell	Cd	BL	/	P
		Pb	BL	/	P
		Hg	BL	/	P
		Cr(VI)	BL	/	P
		PBBs	BL	/	P
		PBDEs	BL	/	P
		DEHP	/	N.D.	P
		DBP	/	N.D.	P
		BBP	/	N.D.	P
		DIBP	/	N.D.	P
03	Nylon rope	Cd	BL	/	P
		Pb	BL	/	P
		Hg	BL	/	P
		Cr(VI)	BL	/	P
		PBBs	BL	/	P
		PBDEs	BL	/	P
		DEHP	/	N.D.	P
		DBP	/	N.D.	P
		BBP	/	N.D.	P
		DIBP	/	N.D.	P
04	Metal tape measure	Cd	BL	/	P
		Pb	BL	/	P
		Hg	BL	/	P
		Cr(VI)	BL	/	P
		PBBs	BL	/	P
		PBDEs	BL	/	P
		DEHP	/	N.D.	P
		DBP	/	N.D.	P
		BBP	/	N.D.	P
		DIBP	/	N.D.	P



RoHS Test Report

Part No.	Part Description	Restricted Substances	Results (mg/kg)		Conclusion (P/F)
			EDXRF	Chemical testing	
05	Orange plastic shell	Cd	BL	/	P
		Pb	BL	/	P
		Hg	BL	/	P
		Cr(VI)	BL	/	P
		PBBs	BL	/	P
		PBDEs	BL	/	P
		DEHP	/	N.D.	P
		DBP	/	N.D.	P
		BBP	/	N.D.	P
		DIBP	/	N.D.	P
06	Green plastic shell	Cd	BL	/	P
		Pb	BL	/	P
		Hg	BL	/	P
		Cr(VI)	BL	/	P
		PBBs	BL	/	P
		PBDEs	BL	/	P
		DEHP	/	N.D.	P
		DBP	/	N.D.	P
		BBP	/	N.D.	P
		DIBP	/	N.D.	P

Note:

mg/kg = milligram per kilogram = ppm

N.D. = Not detected (<MDL)

BL=Less than screening limits of XRF

D = DETECTED = Inconclusive

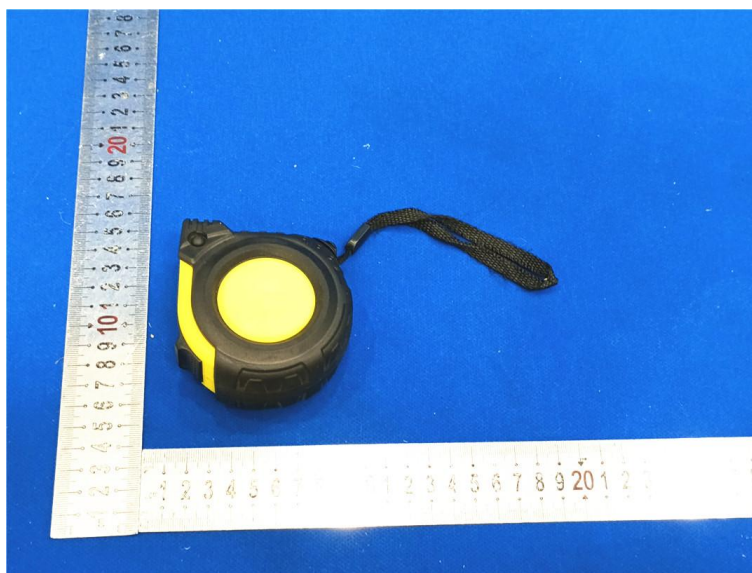
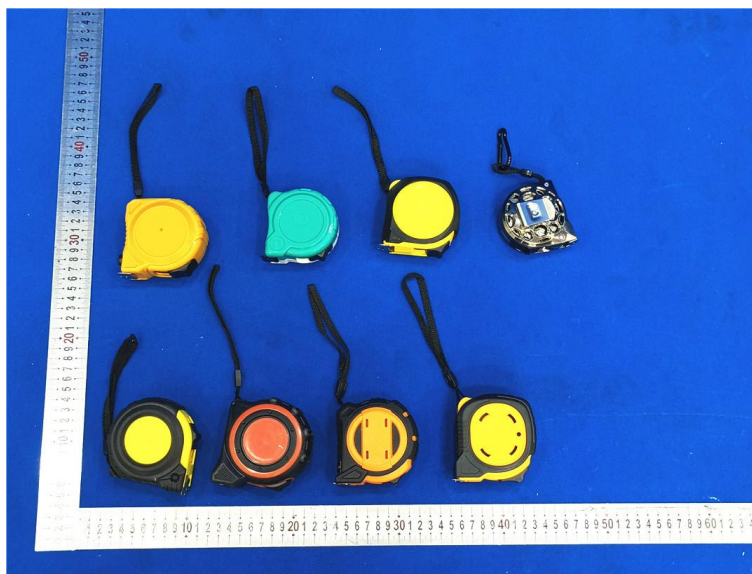
P = PASS

F = FAIL

/ = Not available

RoHS Test Report

Photo(s) of the sample(s)



RoHS Test Report



This test document cannot be reproduced in any way, except in full context, without the prior approval in writing of the laboratory. The result of this test report is based on our received samples only.

*** End of report ***