



Test Report

NTS2411570R

Date: Nov. 25, 2024

Page 1 of 9

Applicant : Henan wook tools Co., Ltd
Address : No. 9, Tongxing Street, Daxiang Village, Renhe Town, Baiyun District, Guangzhou
Manufacturer : Henan wook tools Co., Ltd
Address : No. 9, Tongxing Street, Daxiang Village, Renhe Town, Baiyun District, Guangzhou

The following sample(s) was/were submitted and identified on behalf of the clients as : tape measure
Model No. : WT-50
Client Ref. Info.: N/A
Trade mark: WOKWELL

Date of Sample Received : Nov. 20, 2024
Testing Period : Nov. 20, 2024 - Nov. 25, 2024
Test Requested : Selected test(s) as requested by client.
Test Method : Please refer to next page(s).
Test Results : Please refer to next page(s).
Conclusion : Based on the performed tests on submitted sample(s), the results of Lead, Mercury, Cadmium, Hexavalent chromium, Polybrominated biphenyls (PBBs), Polybrominated diphenyl ethers (PBDEs), DEHP, BBP, DBP, DIBP comply with the limits as set RoHS Directive 2011/65/EU and its amendment directive 2015/863/EU.

Signed for and on behalf of
Shenzhen NOWD Testing Services Co., Ltd.

Jeremy Xie

Jeremy Xie
Approved Signatory



Nowd Testing Services Co., Ltd
<http://www.nowd.com.cn>



Email: nowd@nowd.com.cn
Hotline: +86-755-27830065

This test report may be duplicated completely for legal use with the approval of the applicant. It should not be reproduced except in full, without the written approval of our laboratory. The test results in the report only apply to the tested sample.

Photos

Restriction of Hazardous Substances Directive (RoHS), (EU) 2015/863 & 2011/65/EU

List of Analytes and their Corresponding Test Methods [European Council Directive (EU) 2015/863 & 2011/65/EU] :

Name of Analytes		Test Method(s)
Pb	Lead (Pb)	With reference to IEC 62321-3-1:2013; by ICP-OES.
Cd	Cadmium (Cd)	
Hg	Mercury (Hg)	With reference to IEC 62321-4:2013+A1:2017; by ICP-OES.
Cr⁶⁺	Chromium VI (Cr VI)	<u>Metal</u> : With reference to IEC 62321-5:2013. <u>Polymers & Electronics</u> : With reference to IEC 62321-7-1:2015; IEC 62321-7-2:2017. using UV-Vis.
PBBs	Polybrominated Biphenyls (Sum of PBBs)	With reference to IEC 62321-6:2015, by GC-MS.
	Bromobiphenyls	
	Dibromobiphenyls	
	Tribromobiphenyls	
	Tetrabromobiphenyls	
	Pentabromobiphenyls	
	Hexabromobiphenyls	
	Heptabromobiphenyls	
	Octabromobiphenyls	
	Nonabromobiphenyls	
	Decabromobiphenyl	
PBDEs	Polybrominated Diphenyl Ethers (Sum of PBDEs)	
	Bromodiphenyl ethers	
	Dibromodiphenyl ethers	
	Tribromodiphenyl ethers	
	Tetrabromodiphenyl ethers	
	Pentabromodiphenyl ethers	
	Hexabromodiphenyl ethers	
	Heptabromodiphenyl ethers	
	Octabromodiphenyl ethers	
Nonabromodiphenyl ethers		



Photos

List of Analytes and their Corresponding Test Methods [European Council Directive (EU) 2015/863 & 2011/65/EU] :

Name of Analytes		Test Method(s)
	Decabromodiphenyl ether	
Phthalate	Bis-(2-ethylhexyl) Phthalate (DEHP)	With reference to IEC 62321-8:2017. by GC-MS
	Benzylbutyl Phthalate (BBP)	
	Dibutyl Phthalate (DBP)	
	Diisobutyl phthalate (DIBP)	

**NOWD**

Photos

TEST RESULT

No.	TEST ITEMS		Lead (Pb)	Cadmium (Cd)	Mercury (Hg)	Hexavalent Chromium (Cr ⁶⁺)	PBBs	PBDEs
	UNIT		ppm	ppm	ppm	ppm	ppm	ppm
	Limit		1000	100	1000	1000	1000	1000
001	string	cloth	N.D	N.D	N.D	N.D	N.D	N.D
002	Enclosure	plastic	N.D	N.D	N.D	N.D	N.D	N.D
003	steel rule	rolled steel	N.D	N.D	N.D	N.D	N.D	N.D
004	spring leaf	metallic iron	N.D	N.D	N.D	N.D	N.D	N.D

Notes :

(1) The maximum permissible limit is quoted from the directive 2011/65/EU, Annex II

Remarks :

- (1) 1 mg/kg = 1 ppm = 0.0001%
- (2) MDL = Method Detection Limit
- (3) ND = Not Detected (< MDL)
- (4) "--" = Not Regulated



Photos

No.	TEST ITEMS		Bis-(2-ethylhexyl) Phthalate (DEHP)	Benzylbutyl Phthalate (BBP)	Dibutyl Phthalate (DBP)	Diisobutyl phthalate (DIBP)
	UNIT		ppm	ppm	ppm	ppm
	Limit		1000	1000	1000	1000
001	Cummerbund	Black fabric	N.D.	N.D.	N.D.	N.D.
002	Box	Paper	N.D.	N.D.	N.D.	N.D.

Notes :

(1) The maximum permissible limit is quoted from the directive (EU) 2015/863, Annex II

Remarks :

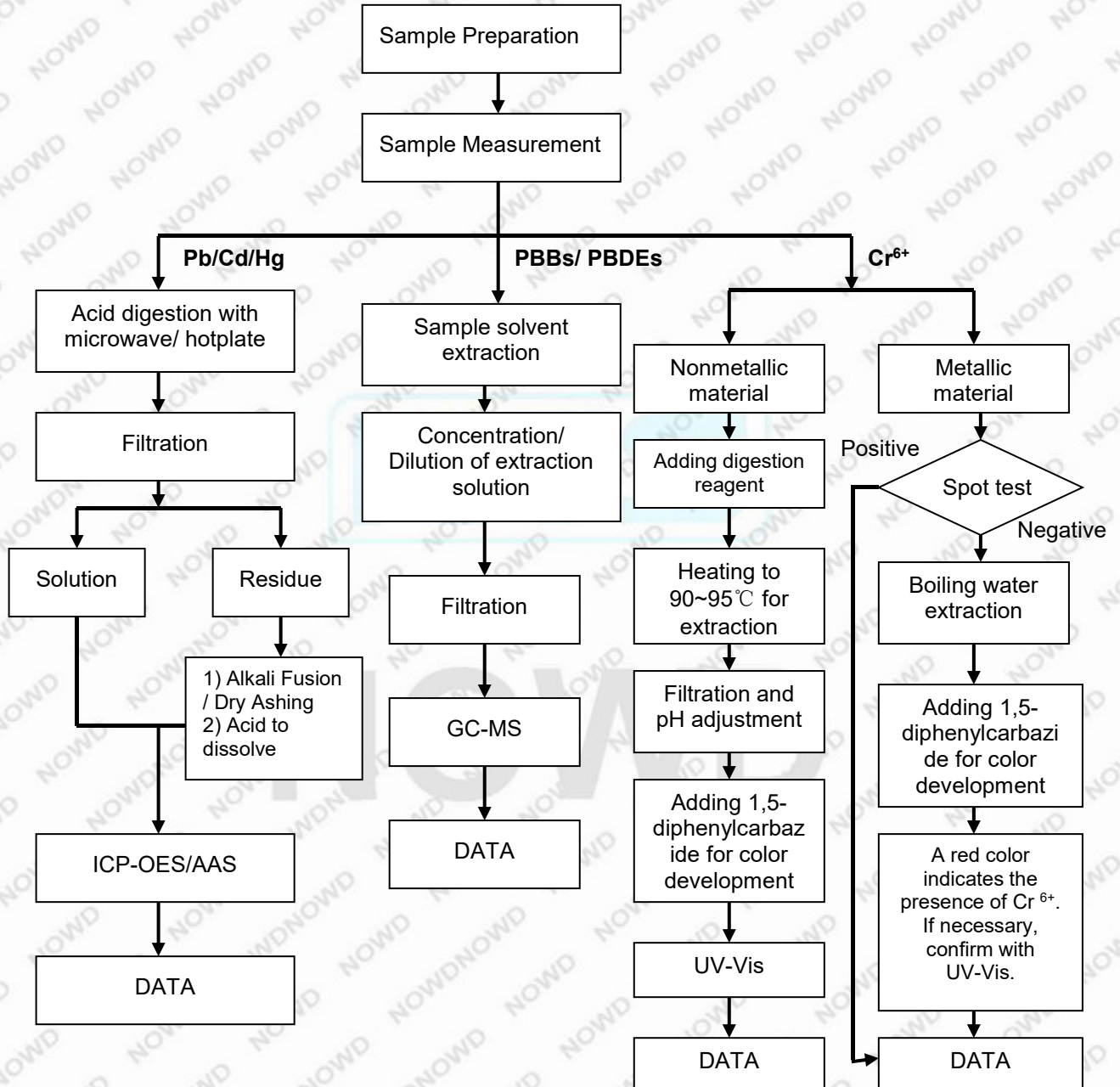
- (1) 1 mg/kg = 1 ppm = 0.0001%
- (2) MDL = Method Detection Limit
- (3) ND = Not Detected (< MDL)
- (4) "-" = Not Regulated


NOWD

Photos

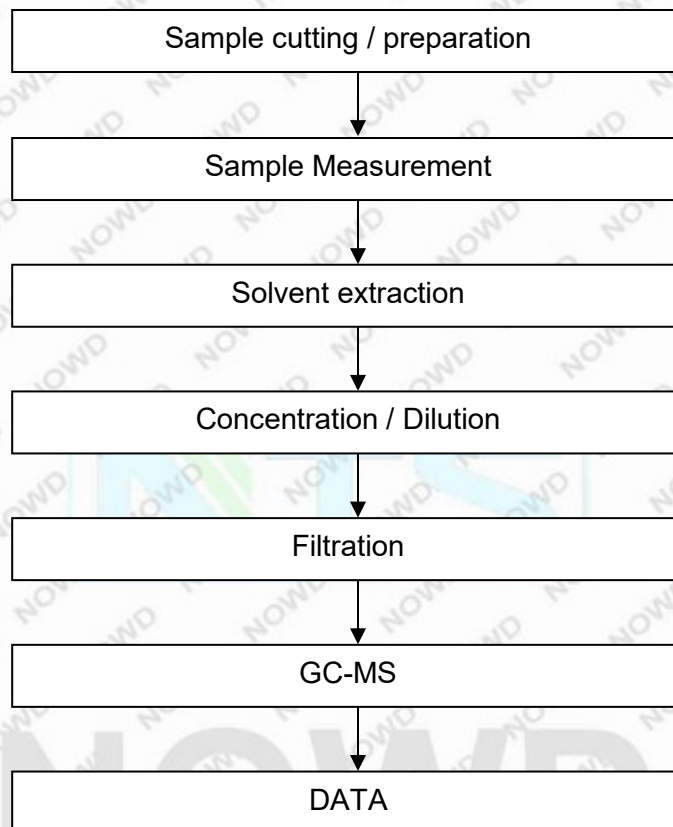
RoHS Testing Flow Chart

- 1) Name of the person who made testing: Susan Yu
- 2) Name of the person in charge of testing: David Chou
- 3) These samples were dissolved totally by pre-conditioning method according to below flow chart (Cr⁶⁺ and PBBs/ PBDEs test method excluded).

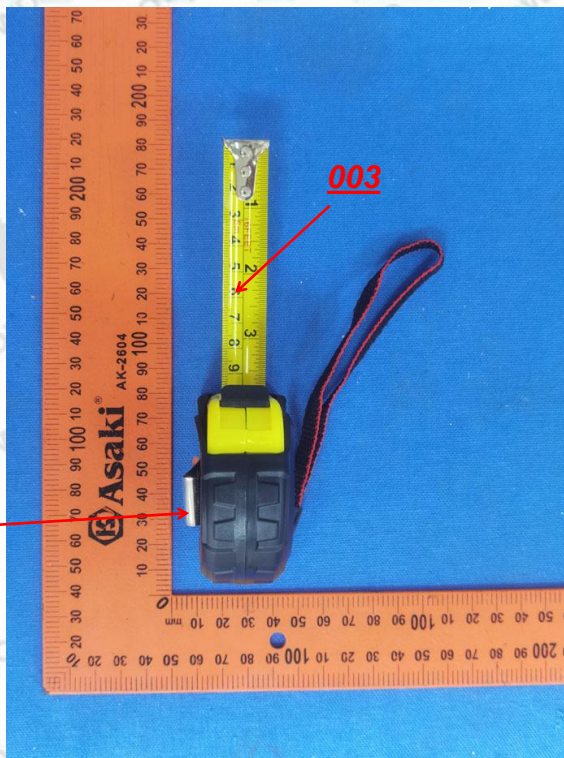


Photos**Phthalates Testing Flow Chart**

- 1) Name of the person who made testing: Susan Yu
- 2) Name of the person in charge of testing: David Chou



Photos



Photos



-- End of Report --

NOWD

